

TILEBUILDER

SOLUTION BRIEF



Introduction

As organizations increasingly adopt SAP Fiori apps or upgrade to S/4HANA, the Fiori Launchpad becomes the central user portal, replacing SAPGUI and serving as the primary dashboard, inbox, and workspace for users. One of the Fiori Launchpad's greatest strengths is its capability to display dynamic tiles, providing users with essential information at a glance. However, most SAP-delivered tiles lack dynamic content, with the majority being static tiles that show only a title and an icon. This limitation restricts the ability to deliver real-time insights and hampers user engagement. Tilebuilder addresses this gap by enabling SAP customers to easily create dynamic, data-driven tiles, transforming the Fiori Launchpad into a truly powerful user dashboard without the need for complex custom development.

Core Features and Capabilities

Tilebuilder empowers users to create dynamic tiles that provide real-time data and critical business insights. With Tilebuilder, developers and consultants can build and customize tiles using only simple ABAP, eliminating the need for advanced SAPUI5 skills or the creation of custom SAP Gateway services. Tiles can display various data fields, such as titles, subtitles, icons, and numerical indicators, and can be refreshed at runtime for up-to-date information. The tool supports microcharts using six built-in templates, including radial, bullet, and line charts, with the option to integrate custom SAPUI5 content for further customization. Image-based tiles are also supported, allowing for the inclusion of small or full-tile images with adjustable text colors for optimized visibility. Tilebuilder simplifies the process of tile development, enabling organizations to build a comprehensive library of dynamic tiles directly in the Fiori Launchpad Designer at a fraction of the traditional cost and effort.

Types of Tile

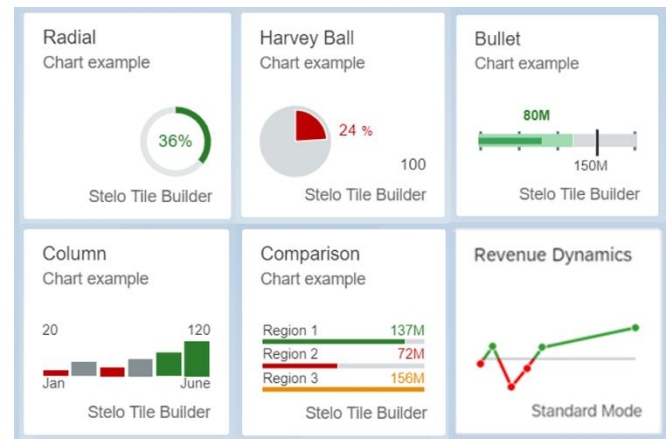
Four types of tile are supported:

Dynamic tile

Dynamic tiles have a pre-defined format with various data that can be refreshed at run-time.

Microchart

Microcharts are supported with six delivered XML templates, or you can add your own SAPUI5 custom content.

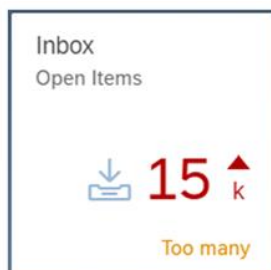


Small image

Where no dynamic data is necessary you can transform tiles using images. Small images take up around a third of the tile space, leaving space for header and footer data

Full-tile image

Tilebuilder also supports images that span the full tile. When the image is dark, the text colour can be changed so that the tile heading is still easily visible.



Dynamic tile



Microchart



Small image



Full-tile image

Benefits of Using Tilebuilder

The benefits of Tilebuilder extend beyond the creation of visually appealing tiles. By enabling real-time access to critical data, Tilebuilder enhances the overall user experience and productivity of Fiori Launchpad users. Information is readily available at a glance, leading to faster decision-making and improved business outcomes.

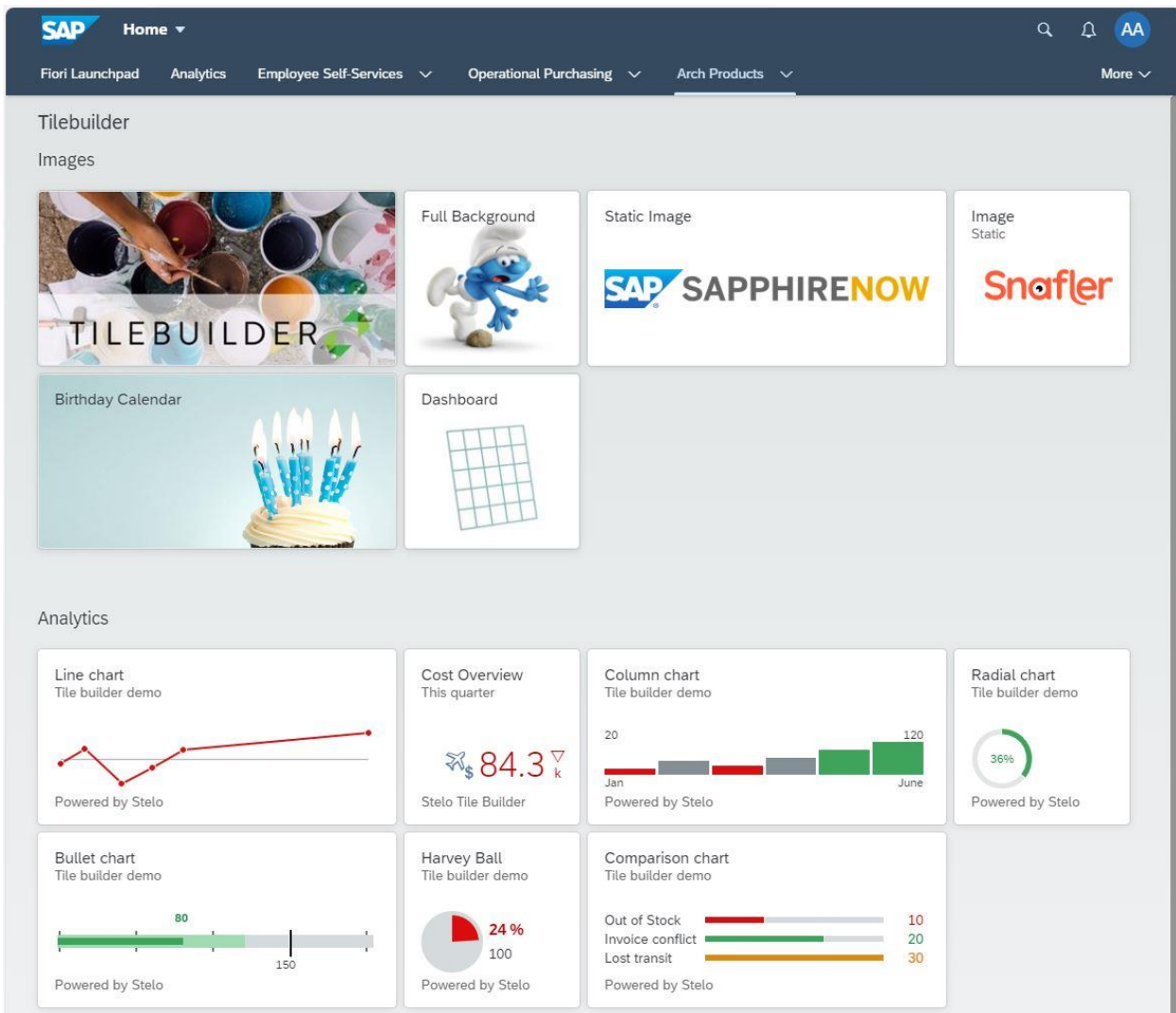
The tool's rapid customization and deployment capabilities reduce the time and cost associated with developing custom tiles, making it an ideal solution for organizations that need to adapt quickly to changing business requirements.

Tilebuilder's low reliance on specialized technical skills makes it accessible to a wider range of users, further driving down costs and increasing deployment flexibility. Organizations can use Tilebuilder to transform the Fiori Launchpad into a powerful, data-driven dashboard tailored to their specific needs, making it a key driver of digital transformation initiatives.

How Tilebuilder Works

Tilebuilder leverages a frontend dynamic tile wizard and a backend gateway interface to expose business data through simple ABAP function modules. At design time, Tilebuilder operates within the Fiori Launchpad Designer, enabling users to create and configure custom tiles with ease. In the backend, simple ABAP functions select the data that drives the tiles, while at runtime, a pre-delivered Gateway service retrieves and displays data on the Fiori Launchpad.

This architecture ensures that tile creation and deployment are fast, efficient, and highly customizable without the need for complex development cycles or specialized tools.



Use Cases

Tilebuilder has proven invaluable for organizations looking to optimize their Fiori Launchpad with dynamic tiles that provide key performance indicators, analytics, and business-critical data.

By integrating microcharts, data visualizations, and image-based tiles, organizations can offer their users an intuitive and informative interface that enhances engagement and productivity.

Whether it involves transforming production dashboards, financial overviews, or operational insights, Tilebuilder ensures that the right data is always at the user's fingertips.

How to Get Started

Organizations interested in leveraging Tilebuilder can quickly get started by engaging with Arch for setup and support. Arch offers a variety of training resources to help teams maximize the tool's capabilities, ensuring a smooth and effective implementation. Our dedicated support team is available to assist with configuration, customization, and any questions that arise during the onboarding process.

Contact us today for a personalized demonstration or consultation. Visit www.arch-global.com or email us at contactus@arch-global.com to learn how Tilebuilder can transform your Fiori LaunchPad.

About Arch

Arch has specialized in SAP solutions for over 20 years, focusing on delivering cutting-edge technologies that enhance SAP Digital Transformation and User Experience (SAP UX). Our product suite continues to grow, enabling organizations to streamline processes, improve efficiency, and achieve seamless integration across their SAP landscapes.

Using the Arch product suite, SAP customers can model new business processes end-to-end and embrace every user touch-point. Whether users interact with SAP data through a Fiori app, web app, PDF document, Microsoft Teams, letter, or email, the suite ensures powerful and easy SAP integration. This holistic approach allows businesses to unify their processes across all devices and platforms, ensuring an optimized user experience.

Arch embraces emerging technologies like the cloud, Internet of Things (IoT), blockchain, and AI. We are building AI features into our products to deliver smarter automation, intelligent data validation, and enhanced decision-making. This forward-thinking approach ensures that our solutions not only solve today's challenges but are also equipped to address future needs in the rapidly evolving digital landscape.

Our suite includes:

- [Varo](#) (e-forms and process automation),
- [Stelo](#) (Fiori forms digitization),
- [Aquiller](#) (employee generation),
- [Floe](#) (business correspondence),
- [Tilebuilder](#) (Fiori tiles),
- [Renda.io](#) (microservices),
- [Mintfly](#) (blockchain integration), and
- [Looply](#) (Microsoft Teams integration).

We work closely with SAP, and our award-winning solutions are recognized globally. Arch helps businesses in EMEA, North America, and the Middle East, as well as through our partner network, to deliver tangible business value and optimize SAP environments for the modern digital enterprise.